



BLUE ORCHID  
HOSPITALITY

# Tower Residences Guest Directory



[www.blueorchid.com](http://www.blueorchid.com)



## Our Story



Blue Orchid's latest property comprises 32 stunning residences, providing the very best one and two-bedroom contemporary design for independent living.

A charming 1900s building boasting stunning views of the Tower of London, Tower Residences' luxury and contemporary studios and apartments provide the perfect base in central London.

Residences provides luxury living for up to four people; each incorporating a fully equipped kitchen, elegant and flexible open-plan dining and living rooms with workstation, together with modern, stylish bathrooms, ideal for both short and long-term stays.

Perfectly located in the heart of London's financial district, just a gemstone's throw away from London's world-renowned attractions and vibrant cultural and heritage scene, Tower Residences is ideal whether for business or leisure and for any length of stay.

Transport links could not be better with Tower Hill, Tower Gateway and Fenchurch Street stations right on your doorstep. Click on the links below for directions.

[Tower Hill Station](#)

[Tower Gateway Station](#)

[Fenchurch Street Station](#)

## In Room Services and Facilities

### Cooling

- Apartments are equipped with either ceiling or portable fans. Both are operated by remote control and have varying speeds
- We recommend switching off fans when residences are not occupied

### Deliveries

- We are happy to accept deliveries such as letters and small packages at Reception. These will be kept securely for you to collect at your convenience

### Dry Cleaning and Laundry Service

- A same day service is available. Please complete the form located in the wardrobe, place your items in the laundry bag provided and leave with Reception. Kindly note the timings on the form must be adhered to when wanting laundry service

### Entry Phone

- Each Residence is equipped with a video entry phone for easy communications with visitors and guests. For security reasons you cannot remotely allow access to the building
- You must meet your visitors and guests at the main entrance

### Heating

- Heating is by electric radiators. These are switched on and off on each unit and manually adjusted to your comfort
- We recommend switching off radiators when residences are not occupied

### Lighting and Electricity

- The power in your room is activated by placing the room key in the slot located next to the entrance
- We recommend removing the key card from this slot when residences are not occupied

### Housekeeping

- Residences are serviced every third day together with the changing of bedding and towelling
- Each Residence is equipped with its own vacuum cleaner
- \*See Waste collection

### Keyless Entry

- Guests can use keyless entry during their stay. Simply download the app JustIN Mobile and follow the instructions to register. Reception will then support your keyless entry for you and your guests. Up to 4 guests per room can make use of keyless entry through mobile telephones

## In Room Services and Facilities

### Telephone

- Your Residence is equipped with a direct line telephone. If you wish to make an external call, dial '9' followed by the area code and telephone number. Charges may apply for calls to specific numbers as follows. These charges are subject to change from time to time from the telephone provider
- A minimum charge of £0.30 applies to each call. Tariffs are charged to the nearest second thereafter. Charges shown are per minute unless otherwise stated

### UK

- Local – £0.30 (London area only)
- National – £0.40
- Mobile – £0.95
- Special services - £3.00
- Calls to numbers starting 0500, 0800, 0808 and 144 are free of charge
- 118 calls - £3.50

### International

- USA & Canada – £0.95
- All of Europe & Finland, Czech Rep, Slovakia, Hungary, Greece including Albania, Bulgaria, Iceland, Turkey - £1.25
- Australia & New Zealand - £1.75
- Rest of the World - £3.00
- Satellite - £10.00

To contact a member of the hotel team, please use the following extensions:

- Reception: 7000 or 0

### Smoking

- Tower Residences is non-smoking, and you are reminded it is against the law to smoke/vape anywhere inside the building
- Smoking in a Residence or anywhere in the building will result in a £500.00 fine for deep cleaning together with the possibility of additional charges if the room is not resalable thereafter

### Television and Chromecast TV

- Enjoy access to a wide range of digital and satellite channels from the smart TV
- Enjoy home-from-home comforts by streaming your favourite applications direct from your mobile telephone, tablet or laptop onto the TV screen. To stream, scan the QR code on your TV and follow the instructions

### Waste Collection

- We will enter apartments daily for waste collection unless otherwise confirmed by you with Reception or by placing the DND sign on the outside of your door

## In Room Services and Facilities

### Kitchen

All kitchens are equipped with the tools and utensils for everyday cooking. An inventory of all items has been taken prior to your arrival and it is expected the same items be available once you depart. A breakdown of the main items are below:

- Kettle and toaster
- Nespresso machine
- Cafetiere
- Microwave oven
- Crockery, cutlery and glassware
- Cooking utensils including pots and pans

Upon arrival, guests are provided with welcome amenities. These items are as follows and may be subject to change from time to time.

- Selection of teas, Nespresso capsules and condiments
- Milk & Cereals (Special K & Muesli)
- Bottled water
- Dishwasher and washing machine tablets
- Other washing up equipment
- Refuge sacks

Where we consider instructions of some equipment to be helpful, this is noted on the next page

### Water

- Each apartment is fitted with its own boiler for the supply of hot water with timings pre-set by the Residences' engineering team
- Should you require additional hot water during your stay, please call Reception who will be pleased to assist

### WiFi

- All rooms and public areas have access to high-speed internet. Select [TowerResidences](#) from the WiFi list. The password is [BlueOrchid1317](#)
- Select Connect and accept the terms and conditions

### Storage

- For your comfort and convenience, all of our beds are ottoman beds to provide you with additional storage during your stay with us

## In Room Services and Facilities

### Hob

- To operate the hob, touch the power icon until you hear an audible sound
- Set the desired heat setting on the control panel - 1-coolest, 9-hottest
- To switch off, touch the power icon until the illuminated bar above goes out
- CAUTION! The hob can be very hot

### Washer/Dryer

To operate the washer dryer, place detergent into compartment II and load laundry into the drum

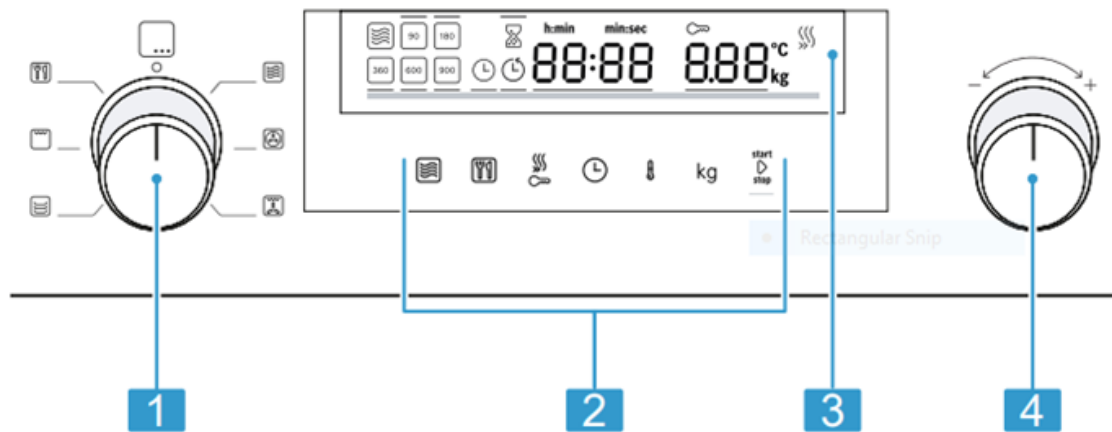
- Ensure the door is closed
- Choose your selected programme (pre-wash, main wash, rinse, final spin, drying).
- Press the Start button to begin
- To pause or cancel the cycle, press and hold the start button until PAUSE (to pause) or 00:00 (to cancel) appears
- At the end of the programme, turn the programme selector to 'OFF'

### Dishwasher

- To operate the dishwasher place the tablet in the compartment in the door
- DO NOT use liquid detergent
- Select the power button to turn the dishwasher on and choose your desired wash programme
- Press the start button to begin the cycle
- The cycle is finished when the timer light on the floor is no longer visible



# Microwave



On certain models, specific details such as the colour and shape may differ from those pictured.

1	Function selector
2	Touch fields
3	Display
4	Rotary selector

## Function selector

Use the function selector to set the types of heating and other functions.  
On some product variants, the function selector can be pushed in.  
If you turn the function selector from the off position to a function, it takes a few seconds for the relevant function to be available.

## 7 Basic operation

### 7.1 Switching on the appliance

- ▶ Turn the function selector to switch on the appliance.
- ✓ The appliance is ready to use.
- ✓ A default value appears in the display.

### 7.2 Switching off the appliance

Switch your appliance off when you are not using it. If no settings are applied for an extended period, the appliance switches itself off automatically.

- ▶ Turn the function selector to the off position.
- ✓ The appliance stops any ongoing functions.
- ✓ The display shows the time.
- ✓ Some displays also remain visible in the display when the appliance has been switched off.

### 7.3 Setting the type of heating and temperature

1. Use the function selector to set the required type of heating.
  - ✓ A default value appears in the display.
2. If necessary, change the settings. To do this, touch the appropriate field and use the rotary selector to change the value.
3. Press **start/stop**.
  - ✓ The appliance starts.
  - ✓ **start/stop** lights up.
- ✓ With a type of heating with temperature, the temperature display lights up gradually.

4. If necessary, use the rotary selector to change the temperature while the oven is in operation.  
When the appliance is in operation, you cannot set the temperature to 40 °C.

### 7.4 Pausing operation

You can pause operation at any time.

1. Press **start/stop** or open the appliance door.
  - ✓ Operation is paused.
  - ✓ **start/stop** flashes.
2. To continue operation, close the appliance door and press **start/stop**.
  - ✓ Operation continues.
  - ✓ **start/stop** lights up.

### 7.5 Stopping operation

You can stop operation at any time.

- ▶ Turn the function selector to the off position.  
The fan may continue to run after operation has been paused or stopped.
- ✓ The appliance stops any ongoing functions.

### 7.6 Rapid heating

To save time, you can shorten the preheat time for certain types of heating from a minimum temperature of 100 °C.

You can use rapid heating for the following types of heating:

- Hot air, exception: Hot air 40 °C
- Hot air grilling

## Restaurants and Bars, including delivery



Authentic Italian dining using the best local ingredients for its artisanal homemade pasta, masterfully crafted cicchetti menu, and exquisite tasty dolce options. Sensational views over Tower Gardens and the Tower of London provide a stunning backdrop for any meal. Alfresco dining is available.

Opening Hours: Daily, 7.00 - 22.00

Location: Tower Suites by Blue Orchid, 100 Minories, EC3N 1JY

### Breakfast at Cento alla Torre

Enjoy a delicious and extensive continental and English buffet breakfast.

From £10.50 per person

Opening Hours: 7.00 – 10.30 (Weekends and Bank holidays 07.00 – 11.00)

Location: Tower Suites by Blue Orchid, 100 Minories, EC3N 1JY

### Pizza Delivery from Cento Alla Torre

We offer a selection of handmade pizza, available until 21:30 daily. Credit or Debit card payment must be made on delivery. Delivery can be made directly to your door.

- **Margarita** (V) (VE) £13.95
- Cherry Tomatoes, mozzarella and fresh basil. Contains: gluten, dairy (756 kcal) \*Vegan cheese available upon request\*

### **Vegetariana** (V) (VE) £14.95

- Tomato, mozzarella and a selection of char-grilled vegetables Contains: gluten, dairy (820 kcal) \*Vegan cheese available upon request\*

### **Sofia Loren** £16.95

- Burrata, prosciutto, oyster mushroom, rocket and truffle oil Contains: gluten, dairy (868 kcal) \*Vegan cheese available upon request\*

To order, dial Room Service on 6104



### Sapphire Bar

Indulge in a selection of classic beverages or let our mixologists surprise you with a unique blend. Relax in the discrete ambiance of Sapphire Bar.

Opening Hours: 10:00-23:00 (Weekends and Bank holidays 11:00-23:00)

Location: Tower Suites by Blue Orchid, 100 Minories, EC3N 1JY

### Simply Fresh to go

Enjoy a delicious selection of freshly prepared dishes and artisanal coffee on the go. Choose from a variety of freshly baked pastries, mouth-watering savouries and sumptuous desserts.

Opening Hours: Daily, 7:00 - 19.00

Location: Tower Suites by Blue Orchid, 100 Minories, EC3N 1JY



### Food boxes delivered direct to your door

A delicious package of fresh, pre-portioned ingredients; each dish coming with all the ingredients, together with easy-to-follow instructions, for you to prepare the perfect meal. Available until 21:30 daily. Credit or Debit card payment must be made on delivery.

\*Each dish serves two people.

- Korean Fried Chicken / Tonkatsu Chicken Udon Noodles - £30
- Crispy Tofu with Spicy Red Miso / Chilli Tofu Udon - £30
- Chilli King Prawn Udon / Salt and Chilli Chicken - £30
- Chicken Caesar Salad / Pizza Pollo - £26
- Classic Bruschetta / Spinach and Ricotta Tortellini - £26

To order, dial Room Service on 6104

## Beauty and Wellness



Settle back into the hands of expert beauticians in the warmth and tranquillity of Adamo Spa; a haven of well-being amid the bustles of London. Through an award-winning selection of restorative and energising treatments, guests can enjoy exquisite beauty treatments, a diverse selection of massages and nail care treatments.

To book a treatment or review the menu contact Adamo Spa:

By Email: [contact@adamospa.com](mailto:contact@adamospa.com)

By Telephone: Dial '0' for Reception

By scanning the QR Code



Opening Hours: Daily 10:00 - 19:00

Location: Tower Suites by Blue Orchid, 100 Minories, EC3N 1JY



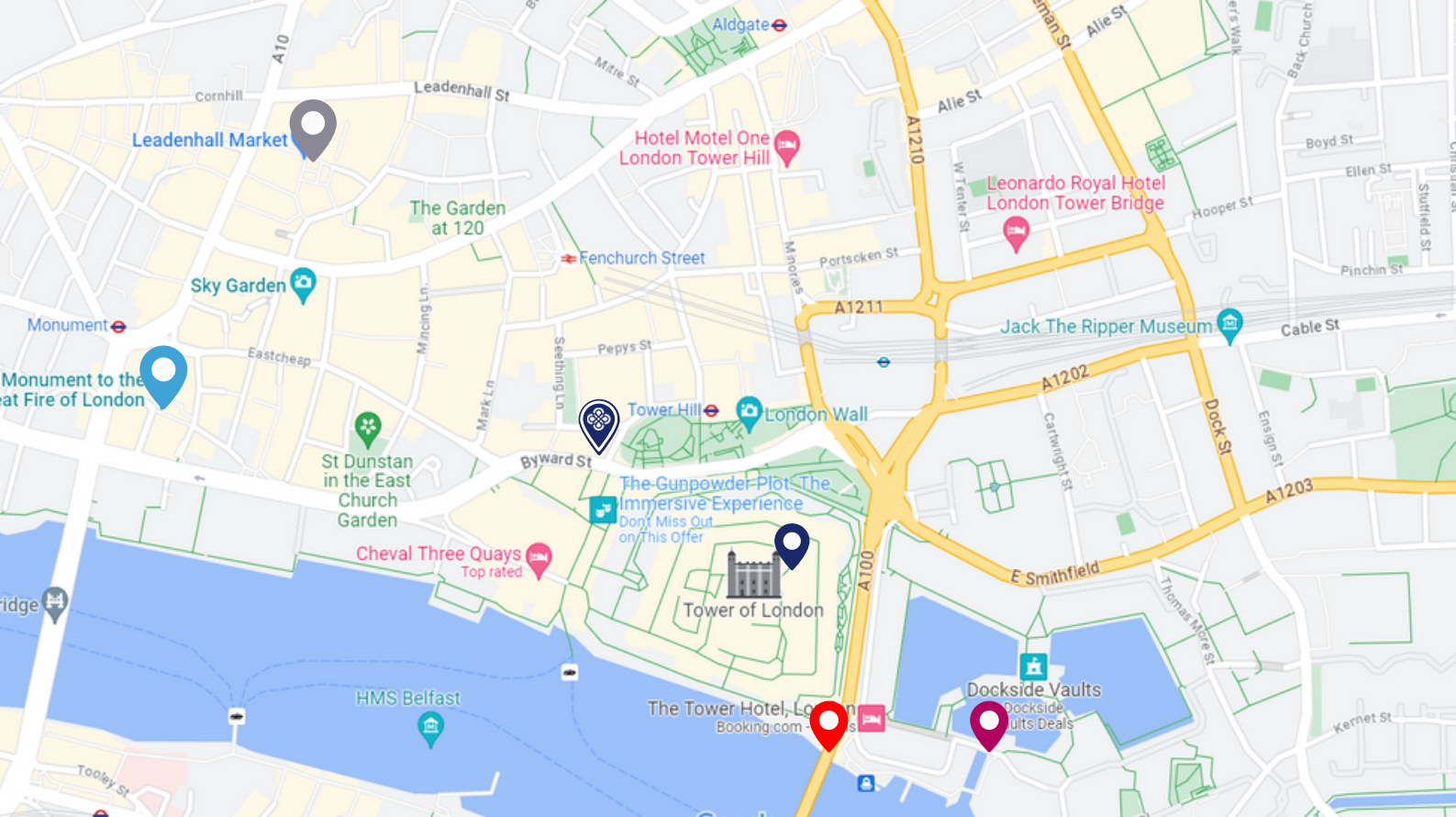
## Exploring the Local Area

Tower Hill is a great location to explore some of the most iconic attractions in London, and there are several free places to visit around the area. Tower Residences staff will be delighted to assist with recommendations and bookings. Here are a few suggestions:






- **Tower Bridge** – a world-famous landmark and located just a short walk from the Tower Residences. You can admire the bridge from the riverbank for free or cross it on foot for a small fee.
- **Tower of London** – an iconic fortress and royal palace that has a rich history dating back to the 11th century. While there is an admission fee to enter the Tower of London, you can see parts of the exterior walls and the famous Tower Hill execution site for free.
- **St. Katharine Docks** – a short walk from Tower Hill Station, a picturesque marina that offers beautiful views of the River Thames. You can enter and stroll around the docks and enjoy the boats, cafes, and restaurants for free.
- **Sky Garden** – just a short distance from Tower Hill Station, offering panoramic views of London from its rooftop garden. Entry is free, but you will need to book a time slot in advance.
- **Leadenhall Market** – an historic covered market that dates back to the 14th century. You can visit the market and admire the architecture and beautiful displays for free.
- **The Monument** – a 202-foot-tall tower that was built to commemorate the Great Fire of London in 1666. You can climb the tower for a small fee, or admire it from the outside for free.

### Nearest Tube Stations

- Tower Gateway – 4/5 mins walk
- Tower Hill – 3 mins walk
- Aldgate – 10 mins walk
- Liverpool Street – 15 mins walk
- Bank – 7 mins walk



## Map Key

-  Leadenhall Market
-  St.Katherine Docks
-  Tower Bridge
-  The Monument
-  Tower Residences
-  Tower of London



## Fire Safety

Be Aware - On arrival at the Residence, please familiarise yourself with the evacuation plan which is located on the back of your entrance door. Please also take a moment to familiarise yourself with your nearest emergency exits.

1. If you discover a fire in your Residence, raise the alarm by firstly calling '0' for the hotel switchboard and then immediately calling '9' and 999 and ask for the Fire Brigade, confirming the location of the fire including your apartment number and floor number.  
13-17 Byward Street, London EC3R 5BA.
2. Evacuate the building using the stairs **ONLY** and assemble at Trinity Square Gardens.  
(Turn left outside the main entrance or turn left and left again outside the rear entrance)
3. **DO NOT USE THE LIFT.**
4. **DO NOT STOP TO COLLECT YOUR PERSONAL BELONGINGS. SHUT THE DOOR WHEN YOU LEAVE.**
5. **DO NOT RE-ENTER THE BUILDING UNTIL TOLD IT IS SAFE.**
6. Make yourself familiar with escape routes.
7. The fire strategy only requires the occupants of the apartment to evacuate immediately.  
The Fire Brigade or the Building's management will assist with other Residence evacuations, if necessary.

## Our Sustainability Initiatives

We recognise our responsibility to work towards a more sustainable future for all.

We focus on providing great products and services whilst considering our impact on the environment. We have measures in place to reduce our energy, waste and water consumption, however, we need your help to achieve this.

Please help us achieve our goals by following these simple steps:

- Reduce your water consumption by using the shower in eco-mode. This is the default setting when turned on. However, if you want a more powerful flow of water use the button on the shower head to achieve this.
- Switch off lights, heating and cooling when not in use.
- When leaving your residence, remove the key card from the key slot and lights will turn off automatically. When we service your residence our staff are trained to do this.
- Place the recycling and food waste separately to your general waste.
- When you are shopping, make a conscious decision to purchase products wrapped in paper rather than plastic, where possible.
- Public area corridors are operated on motion sensors so lights automatically turn on when motion is detected.
- Whilst we will automatically replace bedding and towelling every 3 days, please inform Reception if you do not want this.
- All internal deliveries to Tower Residences are made by The Blue Orchid eco-bike, so adding a zero-carbon footprint within our wider Group. Our dedicated team utilises our eco-bike to transport essential guest amenities including linen and toiletries to insure an eco-friendly experience for our guests.



# BLUE ORCHID HOSPITALITY

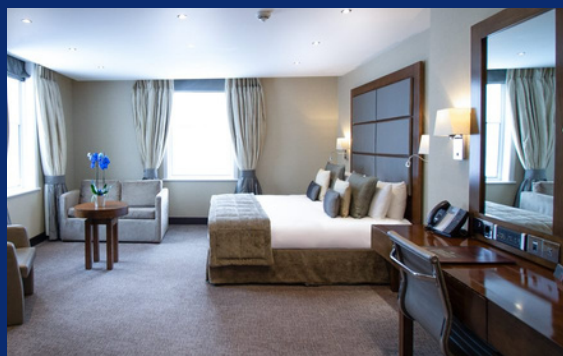
Experience luxury independent living in London's most exciting  
locations with Blue Orchid Hospitality

HOTELS | APARTMENTS | RESIDENCES | SUITES | VENUES | RESTAURANTS | BARS



## Tower Suites

100 Minories, London EC3N 1JY



## The Wellington

71 Vincent Square, London SW1P 2PA



## The Rochester

69 Vane St, London SW1P 2PA

[www.blueorchid.com](http://www.blueorchid.com)  
[reservations@blueorchid.com](mailto:reservations@blueorchid.com)